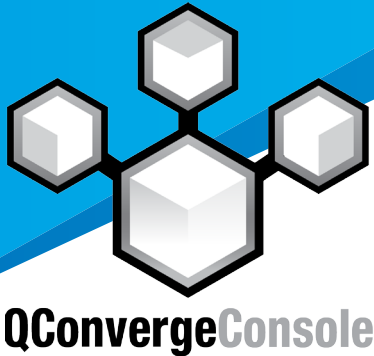


Simplify Storage and Network Adapter Management in VMware

QLogic QConvergeConsole Plug-in for VMware vCenter Makes Adapter Management Easier



The QLogic QConvergeConsole (QCC) Plug-in from Cavium is a set of software components delivered through CIM providers that enhances your hardware management capability within vSphere.

KEY BENEFITS

Simplified Management

- Diagrammatic visibility to storage and networking devices
- Single-pane-of-glass management of QLogic adapters from VMware vCenter
- Multi-fabric and multi-protocol management (Ethernet/FC/FCoE/iSCSI/RDMA and VXLAN/GENEVE)
- Extended visibility to VM locations and resources even with VMs moving via vMotion™

Lower Deployment Times

- Faster deployment
- Easier troubleshooting
- Optimized adapter settings
- Dynamic bandwidth allocation and choice of protocol type
- Single-pane-of-glass view of diagnostics and statistics
- Boot from SAN (FC/FCoE/iSCSI/PXE/UEFI)
- Transceiver status

EXECUTIVE SUMMARY

The QLogic® QConvergeConsole® (QCC) Plug-in from Cavium™ is a set of software components delivered through CIM providers that enhances your hardware management capability within vSphere. VMware® vSphere™ virtualization platform continues to be the dominant enterprise-class server virtualization product on the market. Integrating the VMware vSphere virtualization platform with the 10GbE 3200/ FastLinQ 10/20/25/40/50/100GbE 3400 (578xx)/41000/45000 Intelligent Ethernet Adapters, 10GbE 8100/8200/8300/ FastLinQ 10/20/25/40/50/100GbE/8400 (578xx)/ 41000/45000 Converged Network Adapters, and 32GFC/16GFC/8GFC 2400/2500/2600/2700 Fibre Channel Adapter solutions from Cavium QLogic for network and storage can optimize the virtualized data center infrastructure to provide enterprise-class Local Area Network (LAN), Remote Direct Memory Access (RDMA), and Storage Area Network (SAN) connectivity for servers and cloud-enabled data centers.

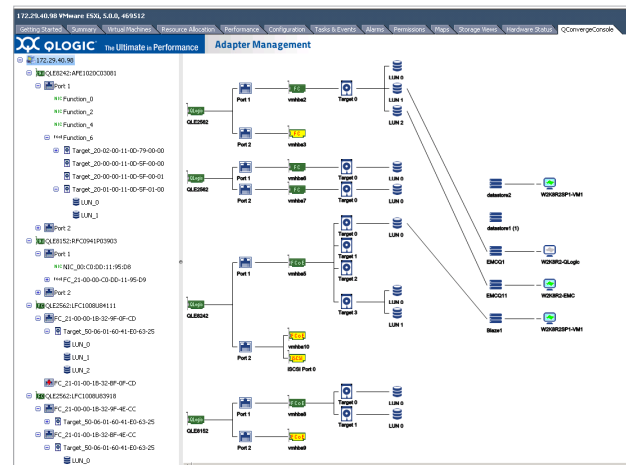


Figure 1. QLogic QCC Plug-in

BENEFITS OF A JOINT QLOGIC AND VMWARE SOLUTION

- Efficient adapter management from within VMware's vCenter via the QCC plug-in
- Flexible, application-specific network resource management (Quality of Service, QoS) with VMflex® and OS- and switch-agnostic NIC Partitioning (NPAR)
- Proven interoperability through standards-based integration and long-standing partnerships inclusive of joint certification testing

INDUSTRY CHALLENGE

Along with all its benefits, server virtualization has increased administrative challenges. Having multiple applications and virtual machines (VMs) on a single physical server breaks the one-to-one software/hardware relationship and also strains the I/O bandwidth capability at the server edge. This can lead to complex management scenarios with workloads that have shared hardware and software resources.

Traditional network and storage administrators who are responsible for connecting the servers to their LAN or RDMA or SAN networks and implementing network policy controls use multiple screens within VMware vSphere to gather the information about their network and storage devices, and then they have to manually build a map to tie all the information together. This method of topology mapping makes the IT manager's ability to meet the business' SLAs more difficult. Efficient management requires better visibility into the interaction of components.

IMPROVE YOUR VISIBILITY

Cavium delivers a method for automating the visibility and management of storage and network components in the data center. The QCC plug-in delivers technology advancement to improve and enhance the user experience. The tool improves business processes, agility, deployment opportunities, and methods for troubleshooting.

The QLogic QCC plug-in from Cavium offers features and benefits described in the following sections:

KEY FEATURES

- Support for VMware vSphere 5.5 and later releases
- End-to-end visual representation of network and storage connectivity (see Figure 1)
 - Storage adapter -> physical port -> virtual port -> target -> LUN -> datastore -> VM
 - Network adapter -> physical port -> network partition -> vSwitch -> port group -> VM
- NPAR management allows dynamic bandwidth allocation and choice of protocol type
- Boot from SAN configuration
- Diagnostics and statistics delivered through a single-pane-of-glass view
- In-transient status using color coding to monitor status of critical components
- Mouse-over capability delivers key configuration information of hardware and software components

With the QCC plug-in, you can manage your QLogic adapters from your virtual console. Using a common tool to manage your QLogic hardware and your virtual infrastructure will increase the efficiency of your IT staff. Instead of switching from console to console, you can complete your task within VMware vCenter. The QCC plug-in eliminates complexity from the installation or expansion of your virtualized environment by giving you better visibility and control for your storage and networking components. Managing your adapters with the plug-in makes it easier to maintain corporate-approved standards and improves the delivery of SLAs. NIC Partition management from within the QCC plug-in allows dynamic bandwidth allocation and the choice of protocol type, giving fine-grain control over your QoS settings and deployment flexibility.

QCC PLUG-IN FOR VMWARE VCENTER MAKES IT POSSIBLE

With the QLogic QConvergeConsole Plug-in for VMware vCenter installed in your VMware environment, you can:

1. Manage your storage and network components visually, saving time
2. Deploy patches and firmware updates remotely, lowering administration costs
3. Dynamically allocate bandwidth and set protocol type, providing the best utilization of network infrastructure

ABOUT CAVIUM

Cavium, Inc. (NASDAQ: CAVM), offers a broad portfolio of infrastructure solutions for compute, security, storage, switching, connectivity and baseband processing. Cavium's highly integrated multi-core SoC products deliver software compatible solutions across low to high performance points enabling secure and intelligent functionality in Enterprise, Data Center and Service Provider Equipment. Cavium processors and solutions are supported by an extensive ecosystem of operating systems, tools, application stacks, hardware reference designs and other products. Cavium is headquartered in San Jose, CA with design centers in California, Massachusetts, India, Israel, China and Taiwan.



Follow us:      

Corporate Headquarters Cavium, Inc. 2315 N. First Street San Jose, CA 95131 408-943-7100

International Offices UK | Ireland | Germany | France | India | Japan | China | Hong Kong | Singapore | Taiwan | Israel

Copyright © 2012 - 2018 Cavium, Inc. All rights reserved worldwide. QLogic LLC (formerly QLogic Corporation) is a wholly owned subsidiary of Cavium, Inc. Cavium, QLogic, VMflex, and QConvergeConsole are registered trademarks or trademarks of Cavium Inc., registered in the United States and other countries. All other brand and product names are registered trademarks or trademarks of their respective owners.

This document is provided for informational purposes only and may contain errors. Cavium reserves the right, without notice, to make changes to this document or in product design or specifications. Cavium disclaims any warranty of any kind, expressed or implied, and does not guarantee that any results or performance described in the document will be achieved by you. All statements regarding Cavium's future direction and intent are subject to change or withdrawal without notice and represent goals and objectives only.