

# 88E1510/88E1518 48-QFN Evaluation Board (Schematics) Public

Note: The only difference between 88E1510 and 88E1518 is VDDO.  
88E1510 supports 2.5V/3.3V VDDO. 88E1518 supports only 1.8V VDDO.

| Table of Contents |                      |
|-------------------|----------------------|
| Page No           | Description          |
| 1                 | Cover page           |
| 2                 | Block Diagram        |
| 3                 | 88E1510 device U1    |
| 4                 | 88E1510 device U2    |
| 5                 | LEDs - Configuration |
| 6-7               | Copper Interfaces    |
| 8                 | RGMII Loopback       |
| 9-10              | Power Supplies       |
|                   |                      |
|                   |                      |
|                   |                      |

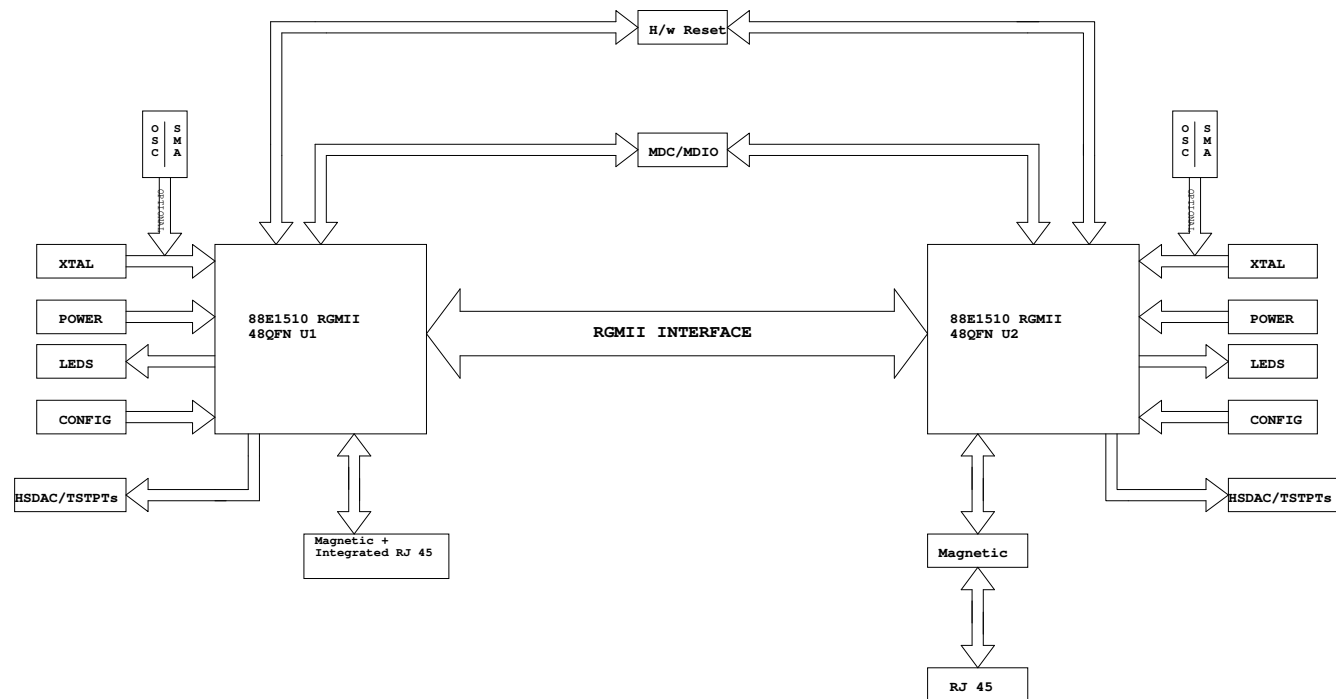
| Revision History |          |                 |
|------------------|----------|-----------------|
| DATE             | REVISION | DESCRIPTION     |
| 10/08/2010       | -        | Initial release |
|                  |          |                 |
|                  |          |                 |
|                  |          |                 |
|                  |          |                 |
|                  |          |                 |
|                  |          |                 |
|                  |          |                 |
|                  |          |                 |



Document Classification -Public

|   |                           |               |
|---|---------------------------|---------------|
| Title   |                           |               |
| 88E1510 48-QFN Evaluation Board (Schematics) Public |                           |               |
| Size  | Document Number           | Rev           |
| Custom  | TD-000036                 | 01            |
| Date  | Friday, December 13, 2019 | Sheet 1 of 10 |

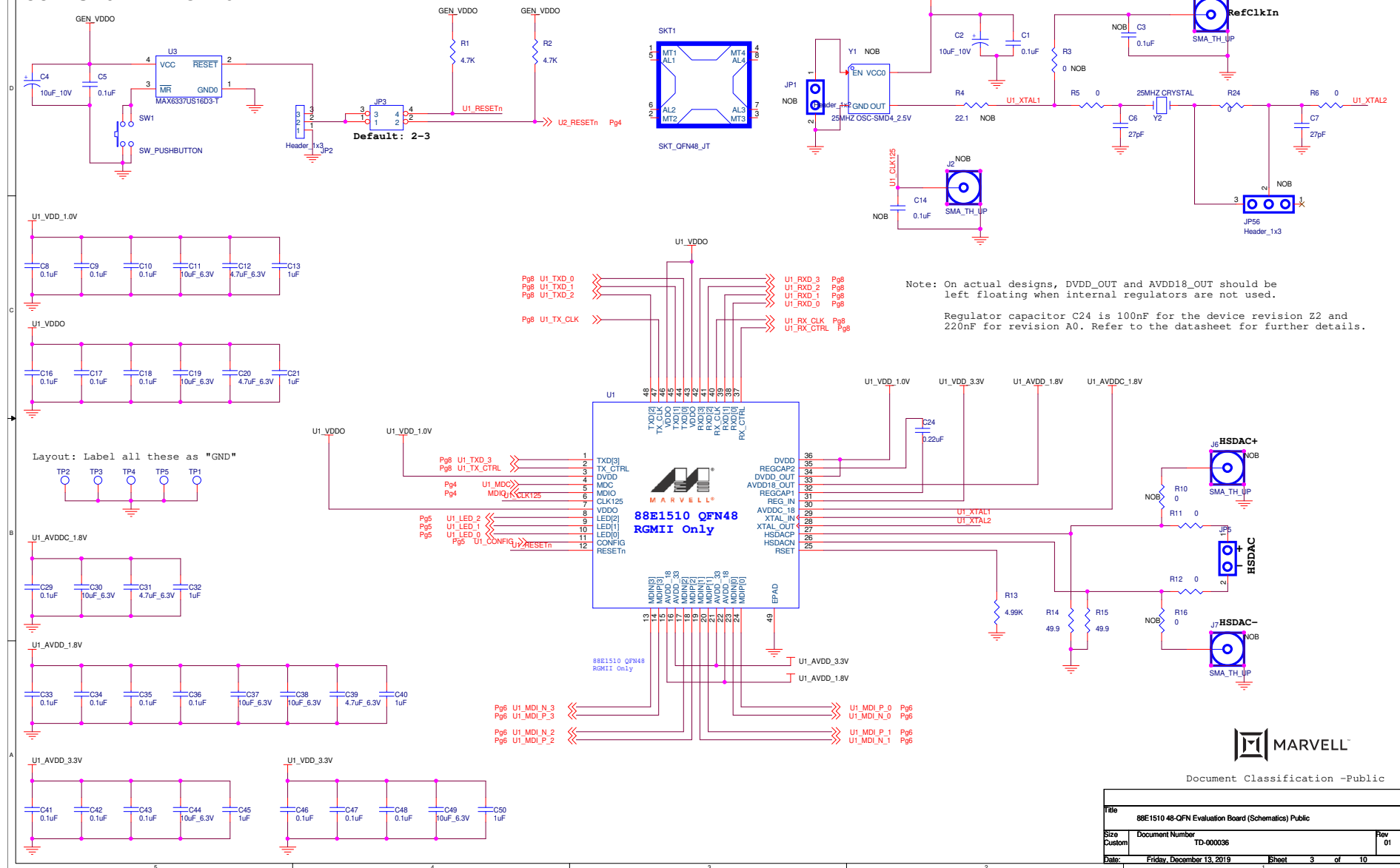
# TOP LEVEL BLOCK DIAGRAM

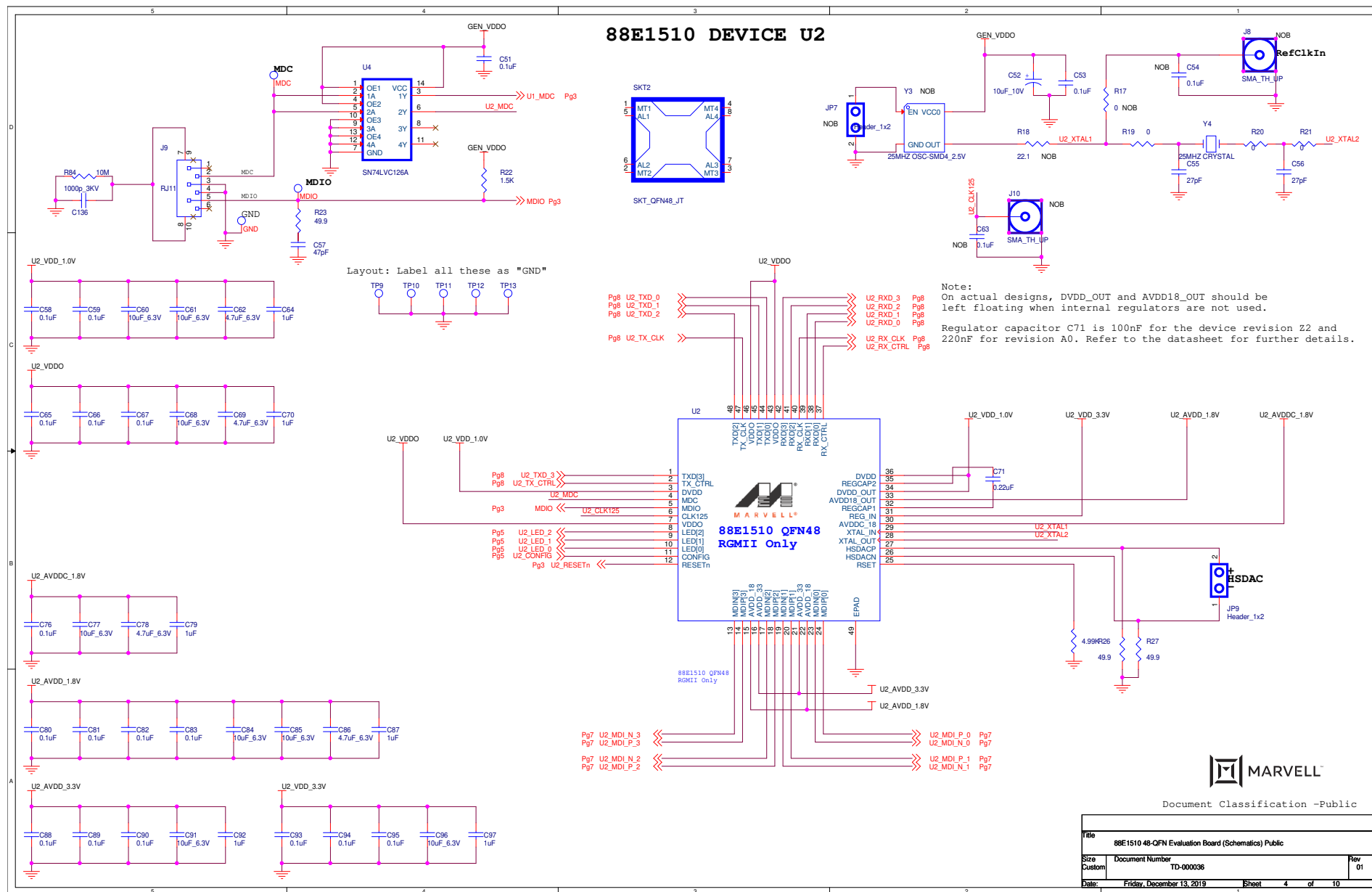


Document Classification -Public

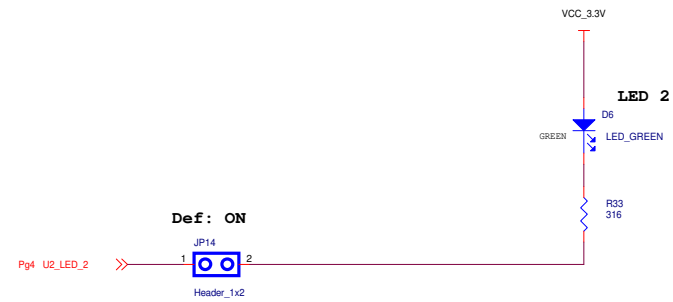
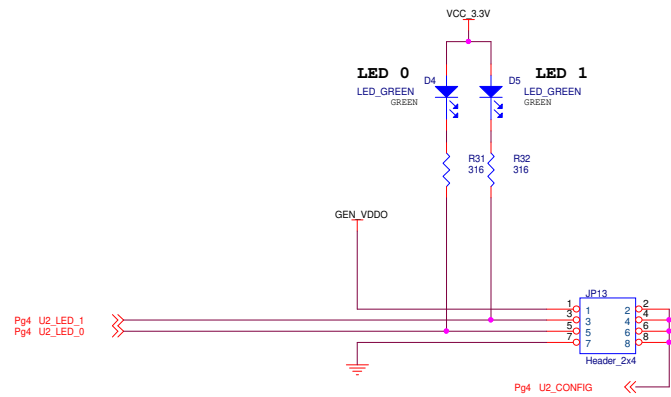
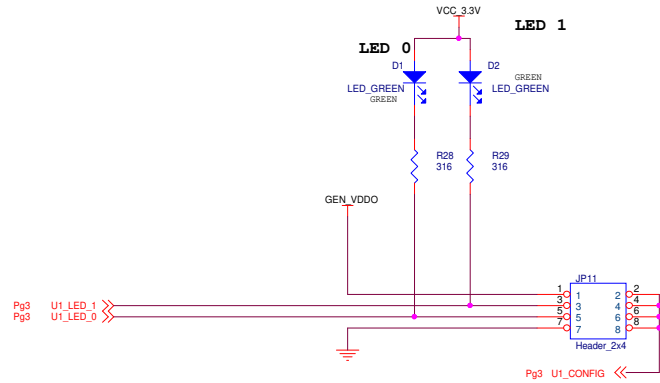
|   |                           |               |
|---|---------------------------|---------------|
| File  |                           |               |
| 88E1510 48-QFN Evaluation Board (Schematics) Public |                           |               |
| Size  | Document Number           | Rev           |
| Custom  | TD-000036                 | 01            |
| Date  | Friday, December 13, 2019 | Sheet 2 of 10 |

```
88E1510  DEVICE  U1
```





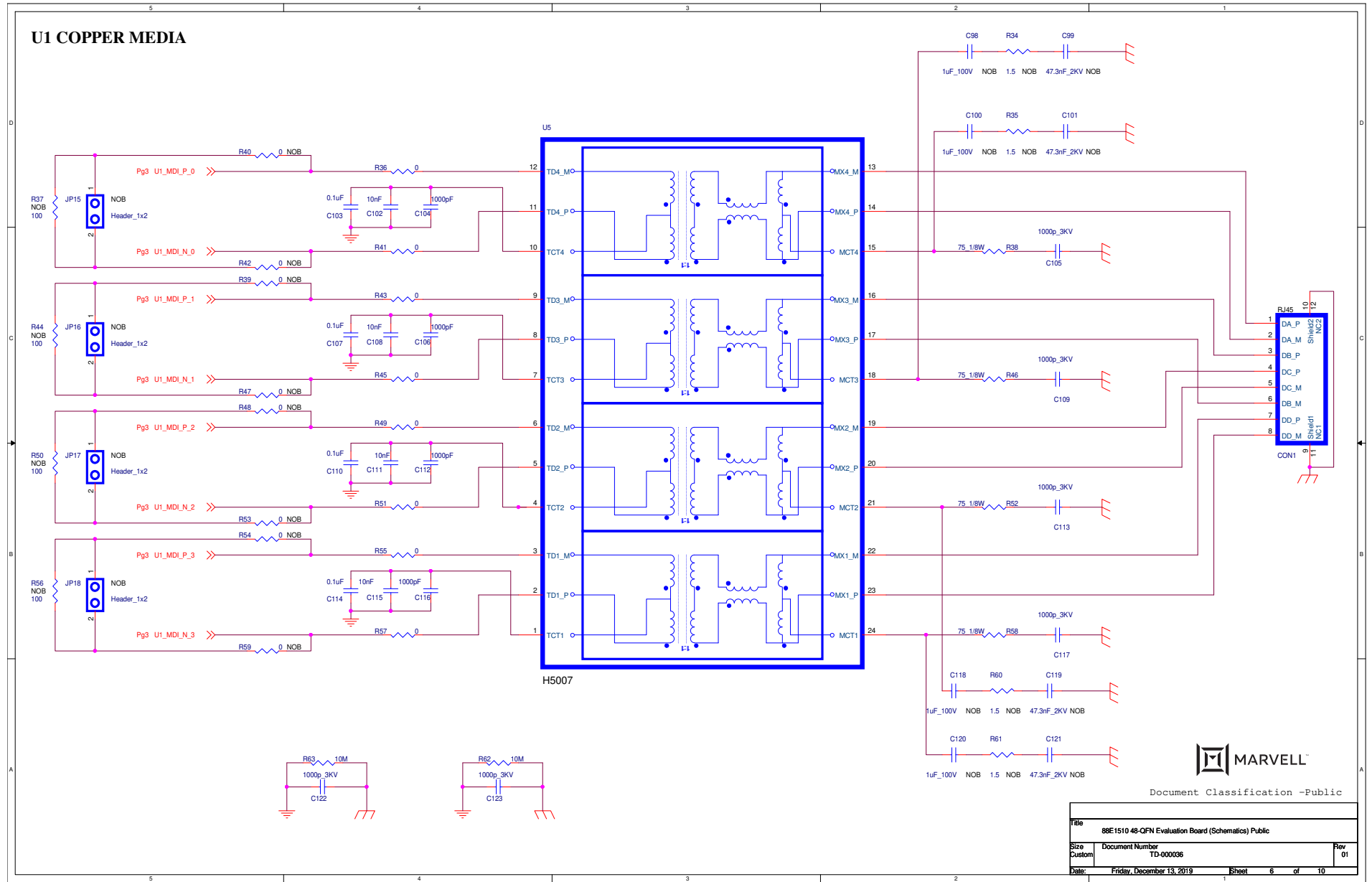
# LEDs-CONFIGURATION



Document Classification -Public

|   |                           |               |
|---|---------------------------|---------------|
| Title   |                           |               |
| 88E1510 48-QFN Evaluation Board (Schematics) Public |                           |               |
| Size  | Document Number           | Rev           |
| Custom  | TD-000036                 | 01            |
| Date  | Friday, December 13, 2019 | Sheet 5 of 10 |

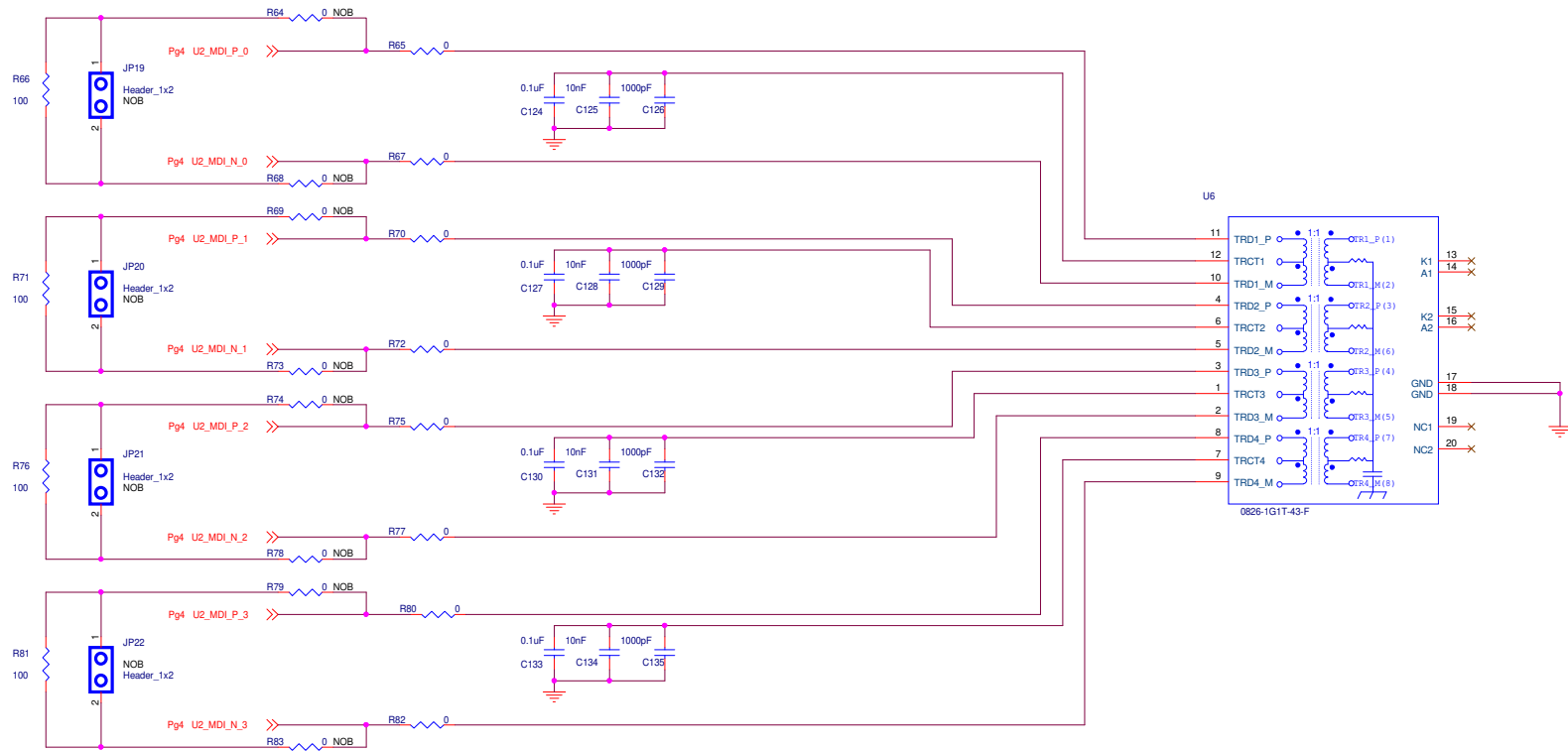
# U1 COPPER MEDIA



Document Classification -Public

|        |                           |       |   |
|--------|---------------------------|-------|---|
| File   |                           |       | 88E1510 48-QFN Evaluation Board (Schematics) Public |
| Size   | Document Number           | Rev   |   |
| Custom | TD-000036                 | 01    |   |
| Date   | Friday, December 13, 2019 | Sheet | 6 of 10   |

## U2 COPPER MEDIA



Document Classification -Public

|   |                           |               |
|---|---------------------------|---------------|
| Title   |                           |               |
| 88E1510 48-QFN Evaluation Board (Schematics) Public |                           |               |
| Size  | Document Number           | Rev           |
| Custom  | TD-000036                 | 01            |
| Date  | Friday, December 13, 2019 | Sheet 7 of 10 |

|   |                           |       |         |
|---|---------------------------|-------|---------|
| Title   |                           |       |         |
| 88E1510 48-QFN Evaluation Board (Schematics) Public |                           |       |         |
| Size Custom   | Document Number           | Rev   |         |
|   | TD-000036                 | 01    |         |
| Date:   | Friday, December 13, 2019 | Sheet | 8 of 10 |



**SUPPLIES PART 1**

J20 Connector\_Power\_Red  
J21 Connector\_Power\_Black

VCC\_5V  
F1 Fuse\_5A  
R111 499  
C159 0.1uF  
C160 100uF\_10V  
D7  
TP15  
VCC\_3.3V  
R110 332  
D8 LED\_GREEN  
Q1 MMBT2222ALT1  
R112 470

U9 88PG817B  
R113 97.6K  
R114 0  
VSET 14  
PSET 15  
CG 4  
SGND 13  
SHDN 11  
SDI 12  
S\_VIN 10  
P\_VIN 9  
PG 10  
SW2 7  
SW1 5  
SFB 3  
L7 1.3uH  
C165 22uF\_6.3V  
C166 22uF\_6.3V  
R115 0  
SGND\_U9  
C167 0.1uF  
VCC\_5V  
SGND\_U9  
JP30 Header\_1x2  
R116 10  
C168 22uF\_6.3V  
C169 22uF\_6.3V

GEN\_VDDO  
R117 332  
D9 LED\_GREEN

U10 88PG817B  
R118 0  
VSET 14  
PSET 15  
CG 4  
SGND 13  
SHDN 11  
SDI 12  
S\_VIN 10  
P\_VIN 9  
PG 10  
SW2 7  
SW1 5  
SFB 3  
L12 1.3uH  
C178 22uF\_6.3V  
C179 22uF\_6.3V  
R124 0  
SGND\_U10  
C180 0.1uF  
VCC\_5V  
JP42 Header\_1x2  
R123 10  
C181 22uF\_6.3V  
C183 22uF\_6.3V

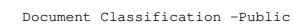
1.8V 2.5V 3.3V  
JP36 Header\_1x2  
JP37 Header\_1x2  
JP38 Header\_1x2  
R120 97.6K  
R121 165K  
R122 475K  
OFF ON OFF

U11 88PG817B  
R123 10  
C181 22uF\_6.3V  
C183 22uF\_6.3V  
L13 1.3uH  
C177 10uF\_10V  
C176 0.1uF  
TP21 U1\_VDDO  
L14 1.3uH  
C182 10uF\_10V  
C184 0.1uF  
TP22 U2\_VDDO

U1 AVDD\_1.8V  
U1 AVDDC\_1.8V  
U2 AVDD\_1.8V  
U2 AVDDC\_1.8V

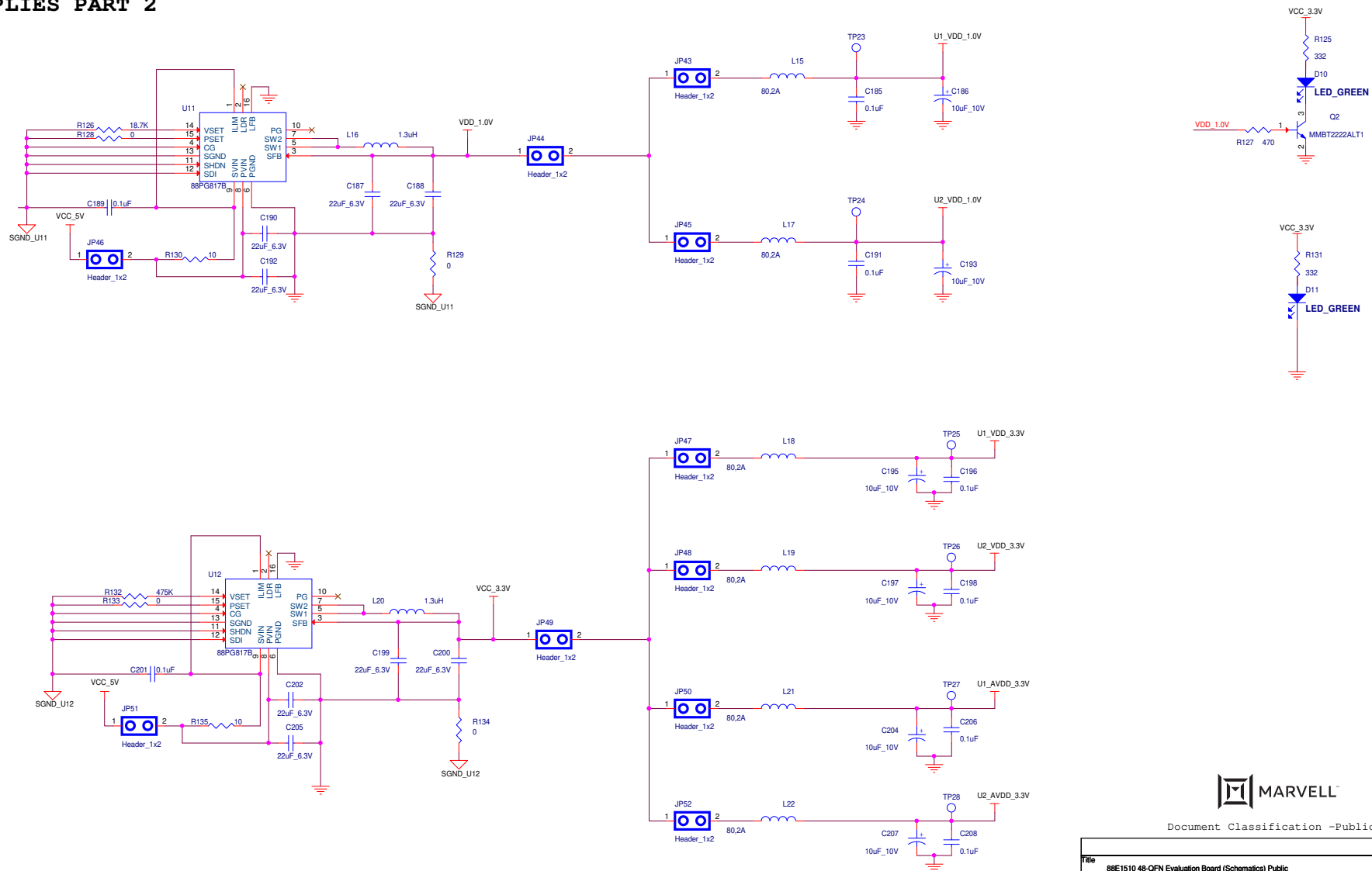
Warning: ONLY 1 jumper should be installed.  
88E1510 supports 2.5V or 3.3V VDDO.  
88E1518 supports only 1.8V VDDO.

File 88E1510 48-QFN Evaluation Board (Schematics) Public  
Size Custom Document Number TD-000036 Rev 01  
Date Friday, December 13, 2019 Sheet 9 of 10



|   |                           |       |      |         |
|---|---------------------------|-------|------|---------|
| Title   |                           |       |      |         |
| 88E1510 48-QFN Evaluation Board (Schematics) Public |                           |       |      |         |
| Size Custom   | Document Number TD-000036 |       |      | Rev (0) |
| Date:   | Friday, December 13, 2019 | Sheet | 9 of | 10      |

## SUPPLIES PART 2



Document Classification -Public

|  |                           |                |
|--|---------------------------|----------------|
| File   |                           |                |
| 88E1510 48-QFN Evaluation Board (Schematic) Public |                           |                |
| Size   | Document Number           | Rev            |
| Custom   | TD-000036                 | 01             |
| Date   | Friday, December 13, 2019 | Sheet 10 of 10 |